



EDIFICIO "A"

PARCHEGGIO ANTISTANTE

INGRESSO PEDONALE AL SUPERCONDOMINIO



RAMPA
CARRAIA



VICINANZA AL POLICLINICO



VERDE LIMITROFO

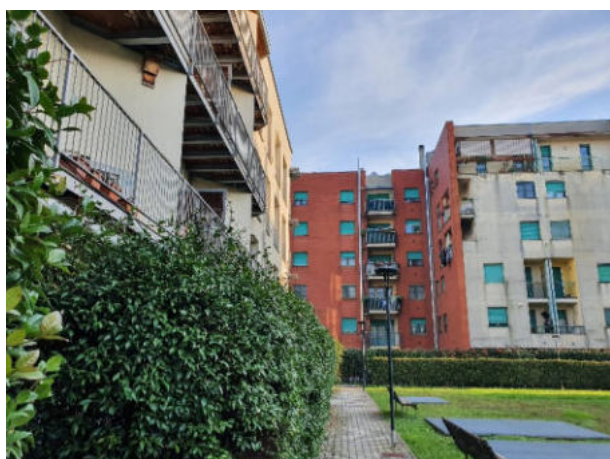


EDIFICIO "A"



INGRESSO AL SUPERCONDOMINIO

INGRESSO ALL'EDIFICIO "A" SCALA "B"



FABBRICATI DEL
SUPERCONDOMINIO

PARTI COMUNI INTERNE



INGRESSO DA CORTILE
E ALL'APPARTAMENTO

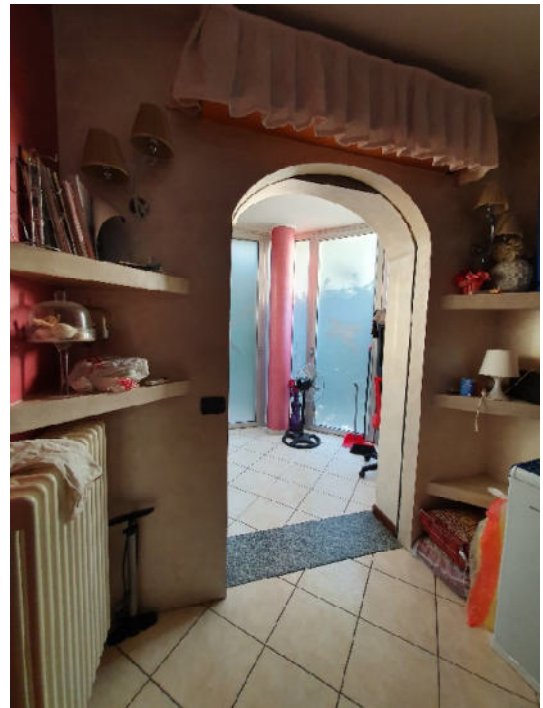
ASCENSORE E SCALA



VIA LEOPARDI 11 SAN DONATO MILANESE - APPARTAMENTO PIANO TERRA

SOGGIORNO e

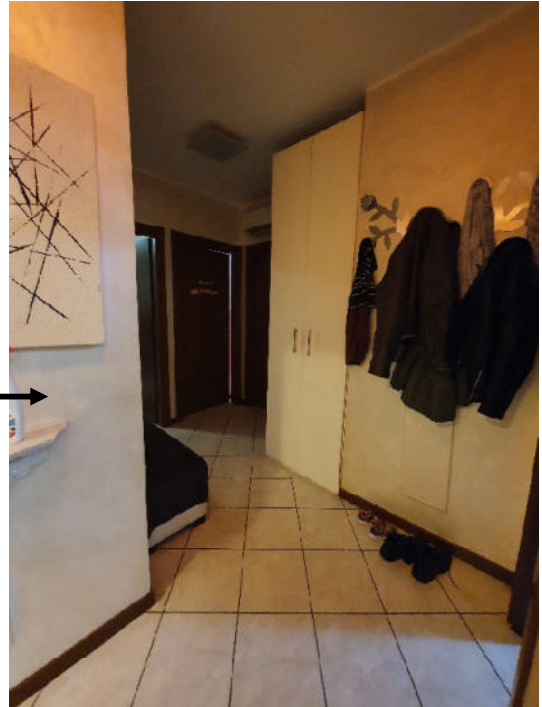
COTTURA



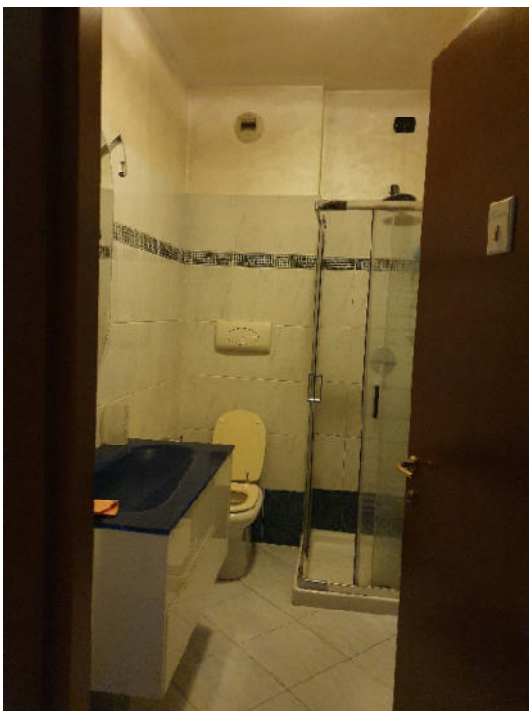
SERRA



ZONA PRANZO



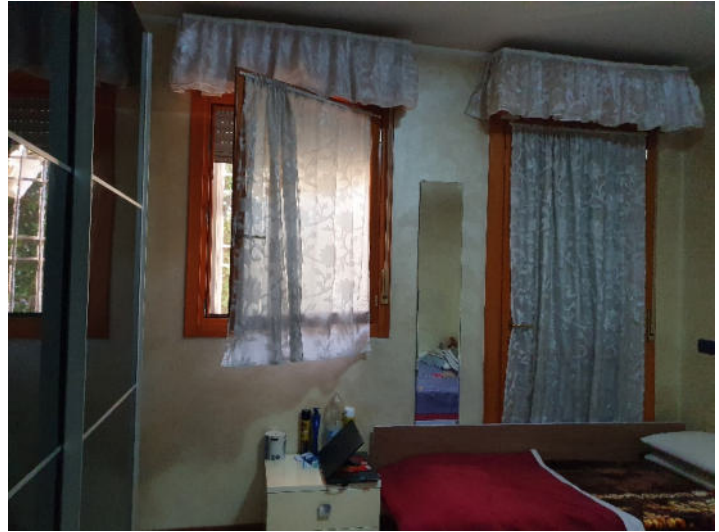
DISIMPEGNO



BAGNO CIECO - PRESSO
LA ZONA GIORNO



CAMERA PRINCIPALE - CONFINANTE CON LA ZONA GIORNO



BAGNO CON FINESTRA

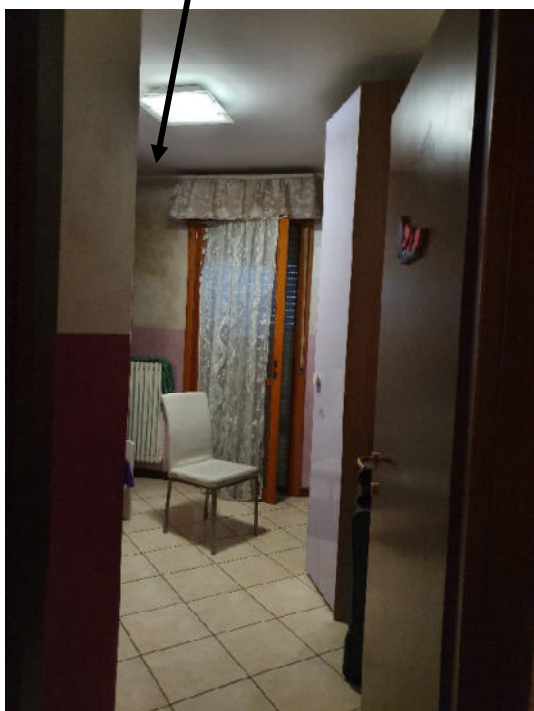


INGRESSO ALLE 2 ULTERIORI CAMERE

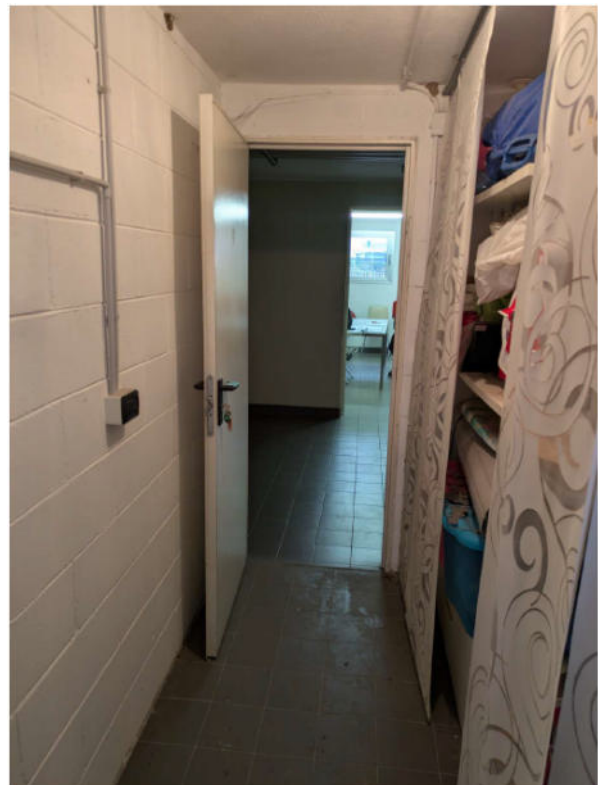
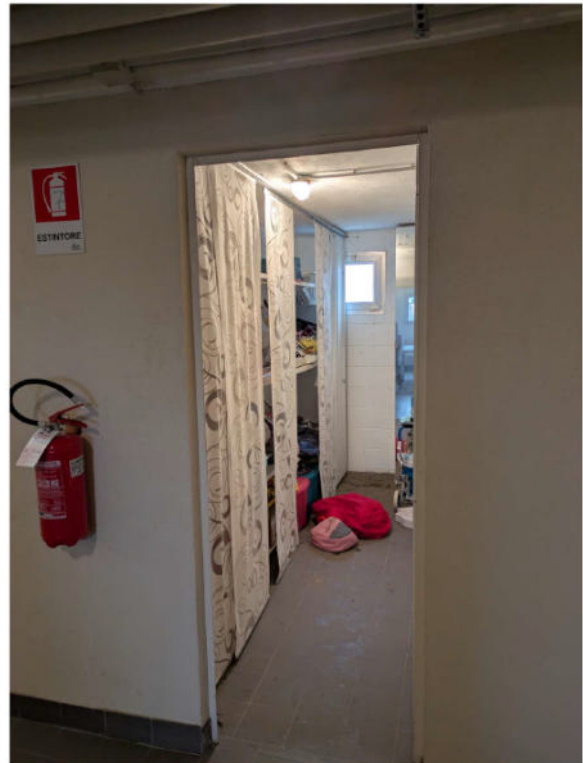


CAMERA

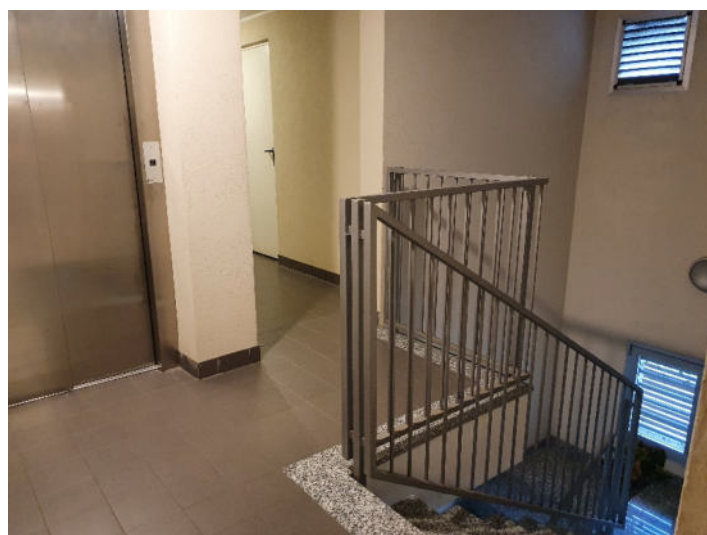
CAMERA



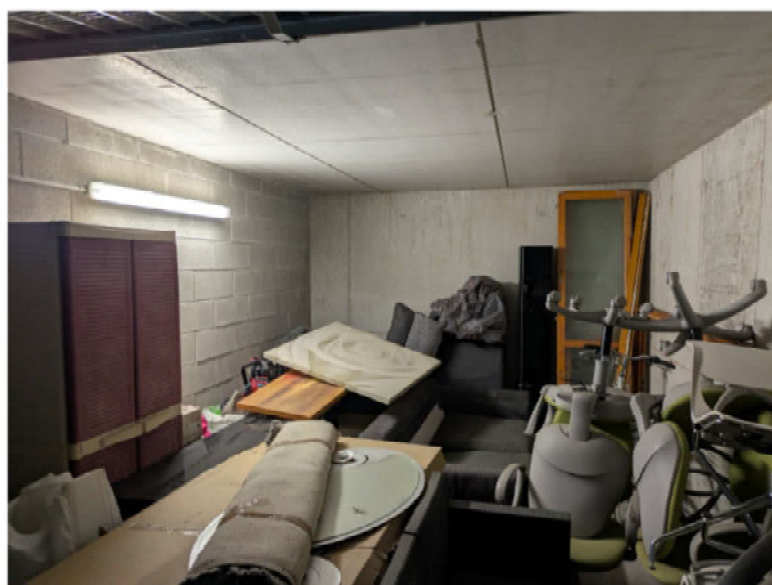
VANO SOTTOTETTO



PARTI COMUNI AL PIANO SOTTOTETTO



BOX AUTO E PARTI COMUNI PIANO S1



VISTA DEL PIANO BOX - USCITA VERSO LA RAMPA

